

14525 Herschel Street

July 2026

4201 H

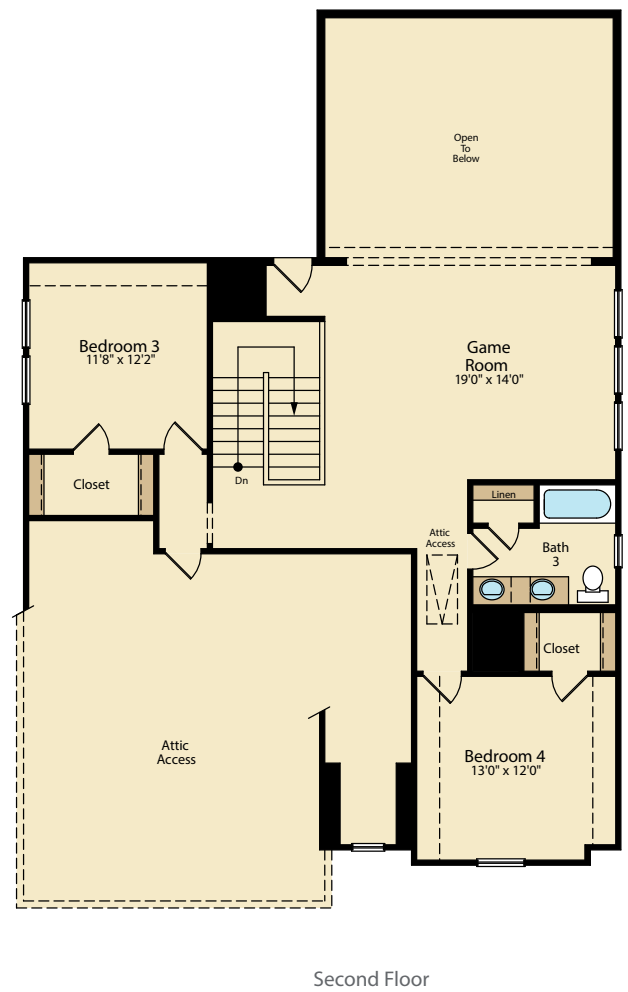
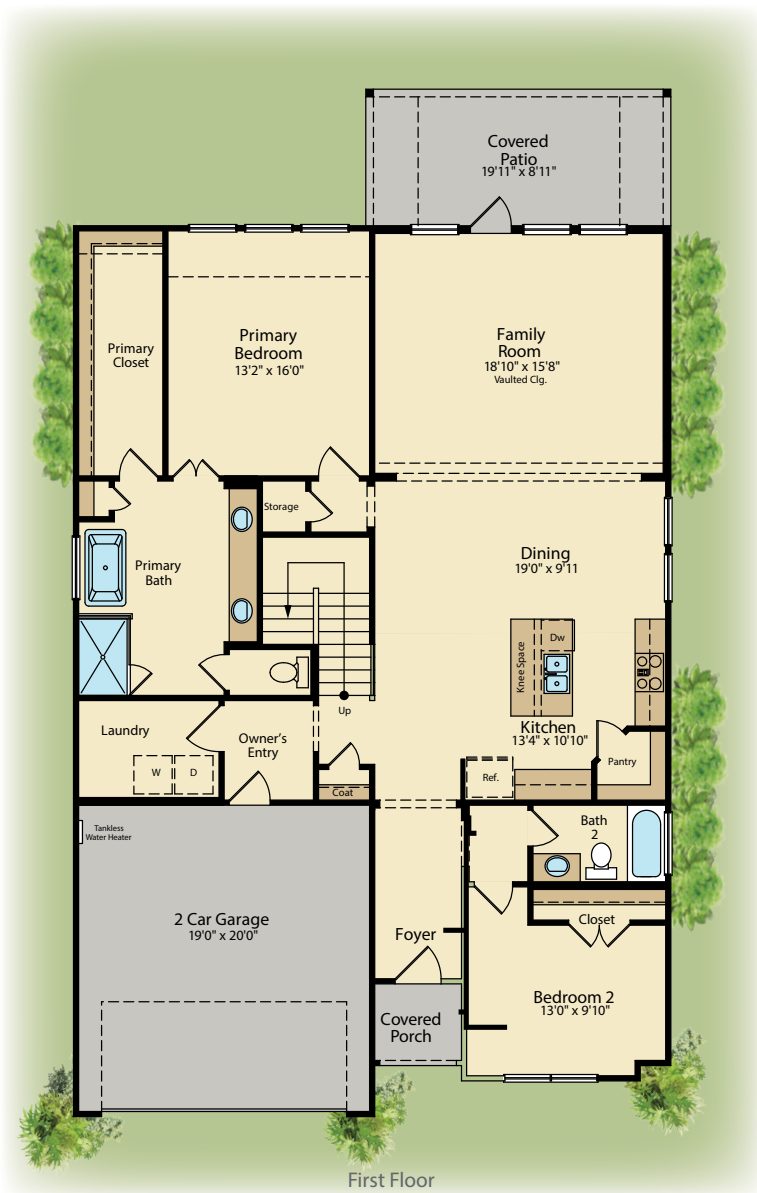
4 Beds

3 Baths

2 Cars

2,803 Sq. Ft.

50' Lot



Prices, structural, exterior, interior features, renderings may not be exact and/or are subject to change. Pictures shown are for illustration purpose only. Incentives are community specific, may vary. Speak to Sales Counselor for final current features, pricing details and estimated completion dates.



David Felty | Community Sales Manager | David.Felty@RislandHomes.com

913.284.6187 | RislandHomes.com